



Seniorengerechte Wohnungen im AWO-Friesenhof in Duisburg-Laar

2. Obergeschoss, Wohnungen 2.1 – 2.10

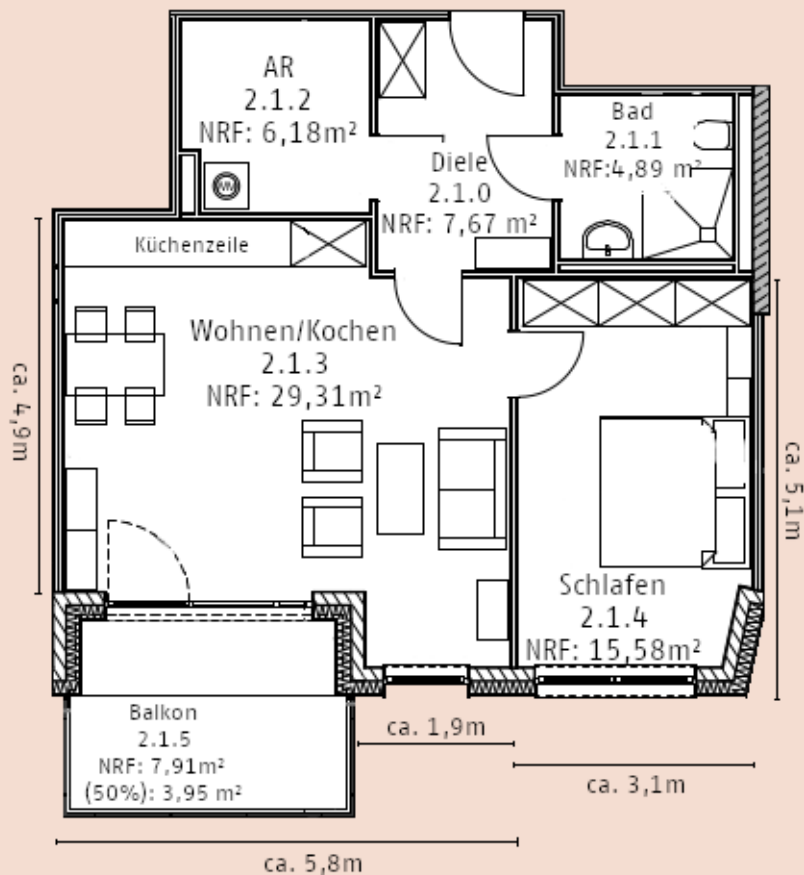
| <u>Wohneinheit</u> | <u>m²</u> | <u>geeignet für</u> |
|--------------------|----------------------|---------------------|
| WE 2.1 | ca. 67 | 2 Personen |
| WE 2.2 | ca. 67 | 2 Personen |
| WE 2.3 | ca. 57 | 1 Person |
| WE 2.4 | ca. 67 | 2 Personen |
| WE 2.5 | ca. 58 | 1 Person |
| WE 2.6 | ca. 55 | 1 Person |
| WE 2.7 | ca. 54 | 1 Person |
| WE 2.8 | ca. 48 | 1 Person |
| WE 2.9 | ca. 47 | 1 Person |
| WE 2.10 | ca. 47 | 1 Person |

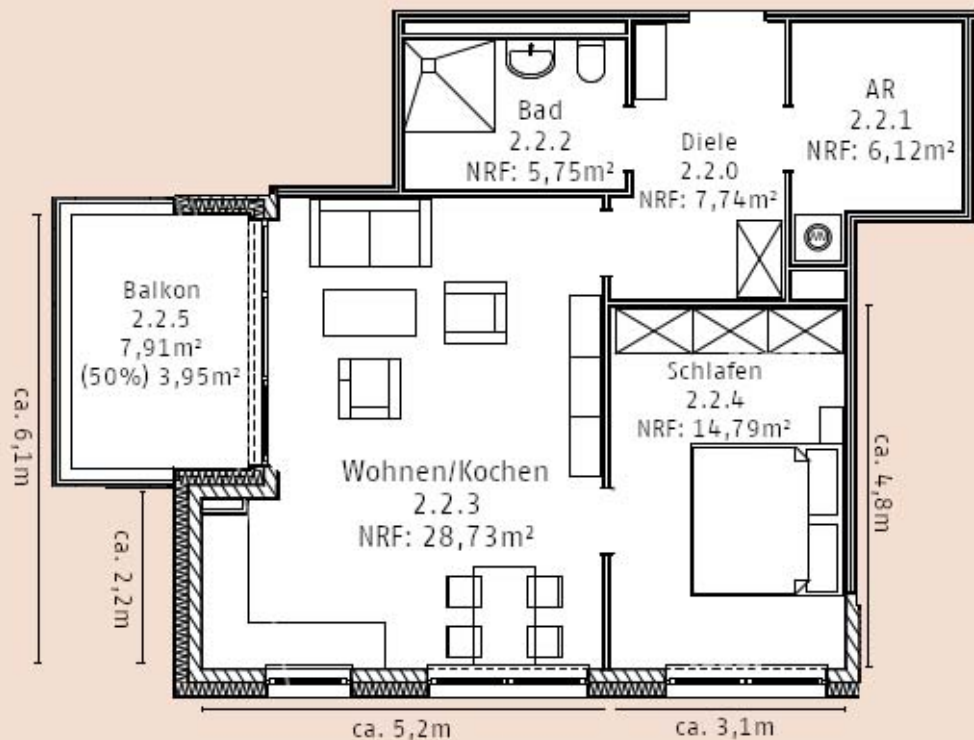
3. Obergeschoss, Wohnungen 3.1 – 3.5

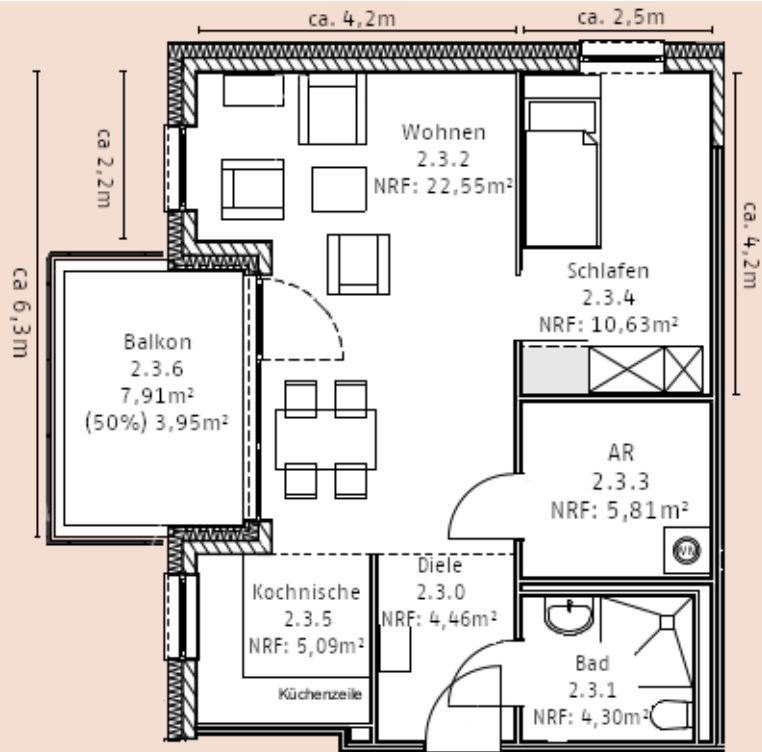
| <u>Wohneinheit</u> | <u>m²</u> | <u>geeignet für</u> |
|--------------------|----------------------|---------------------|
| WE 3.1 | ca. 67 | 2 Personen |
| WE 3.2 | ca. 67 | 2 Personen |
| WE 3.3 | ca. 57 | 1 Person |
| WE 3.4 | ca. 68 | 2 Personen |
| WE 3.5 | ca. 57 | 1 Person |

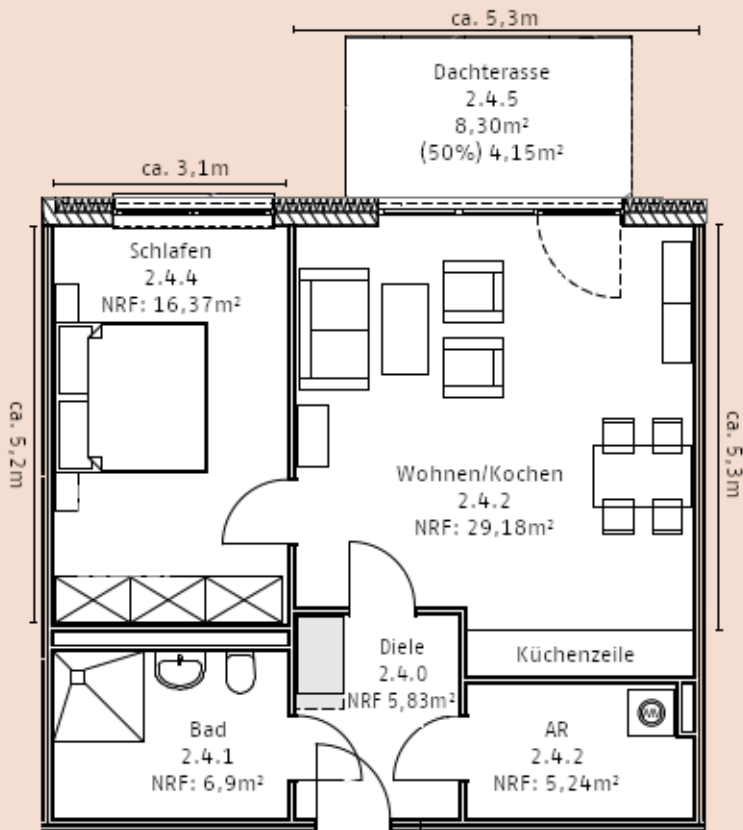
4. Obergeschoss, Wohnungen 4.1 – 4.4

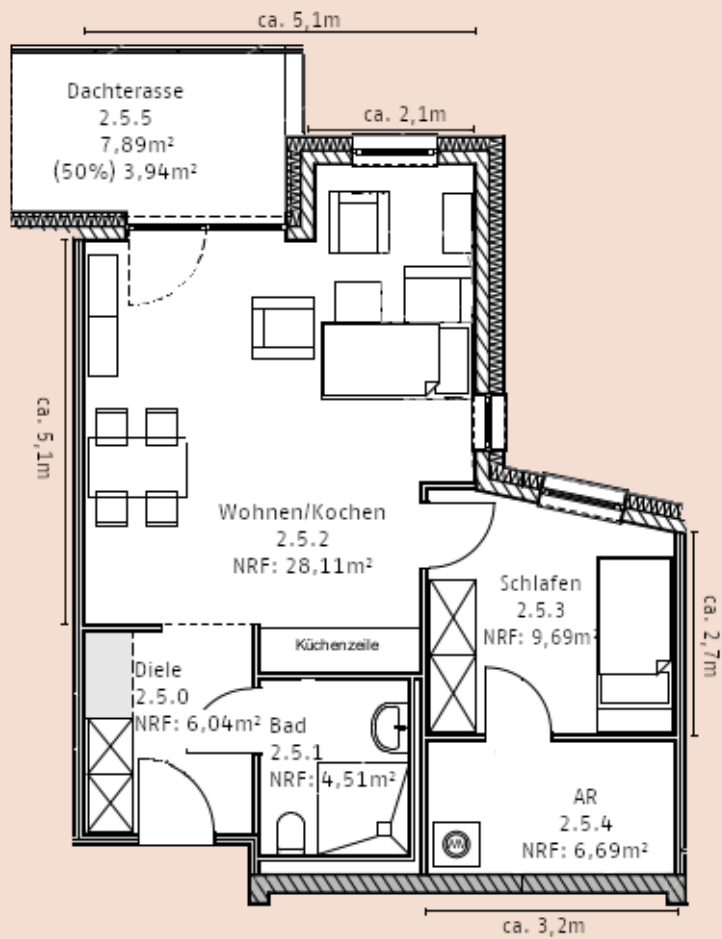
| <u>Wohneinheit</u> | <u>m²</u> | <u>geeignet für</u> |
|--------------------|----------------------|---------------------|
| WE 4.1 | ca. 49 | 1 Personen |
| WE 4.2 | ca. 51 | 1 Personen |
| WE 4.3 | ca. 63 | 2 Personen |
| WE 4.4 | ca. 63 | 2 Personen |

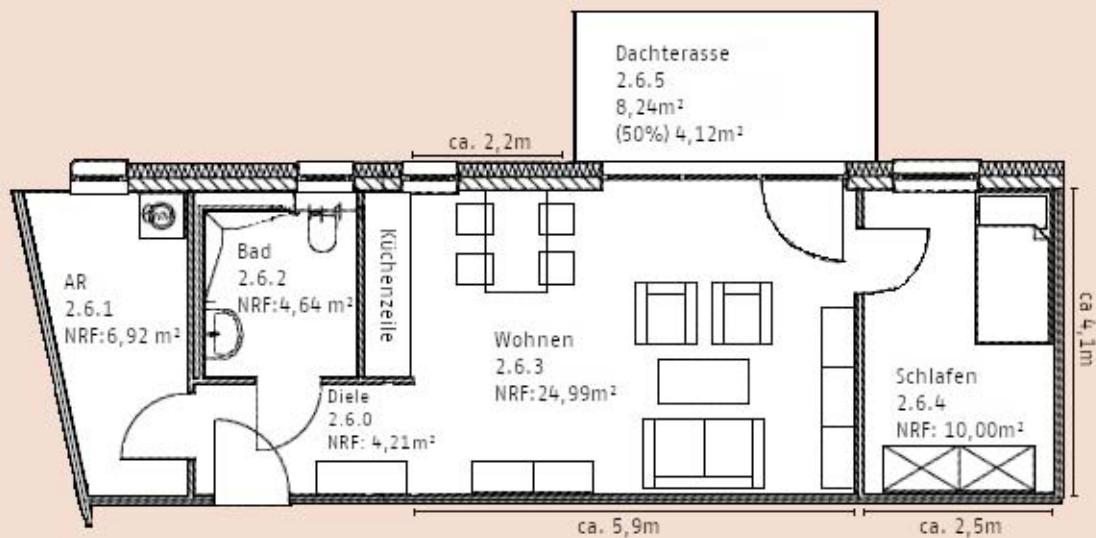


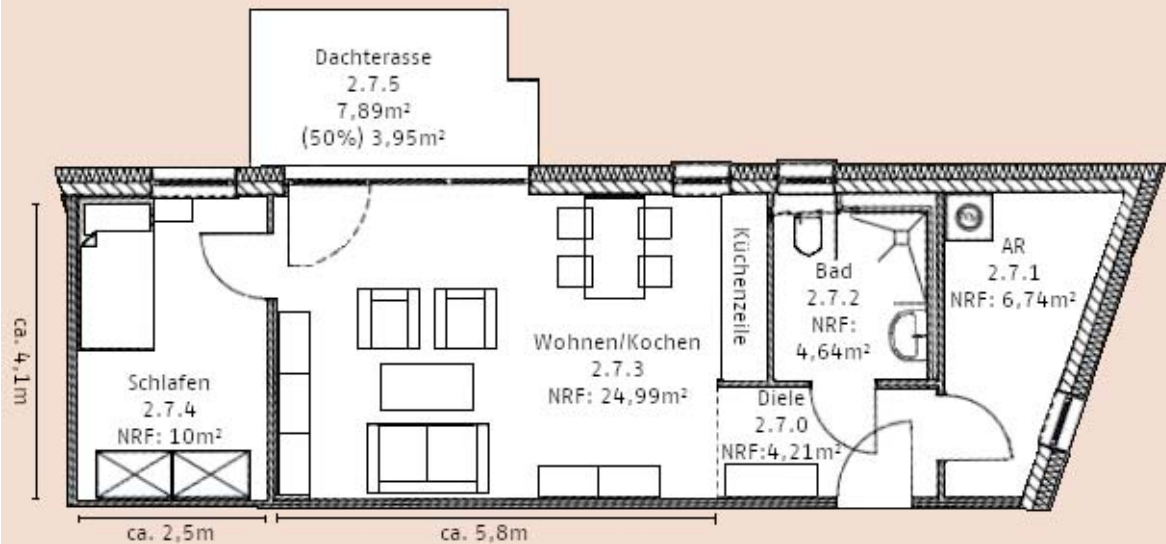


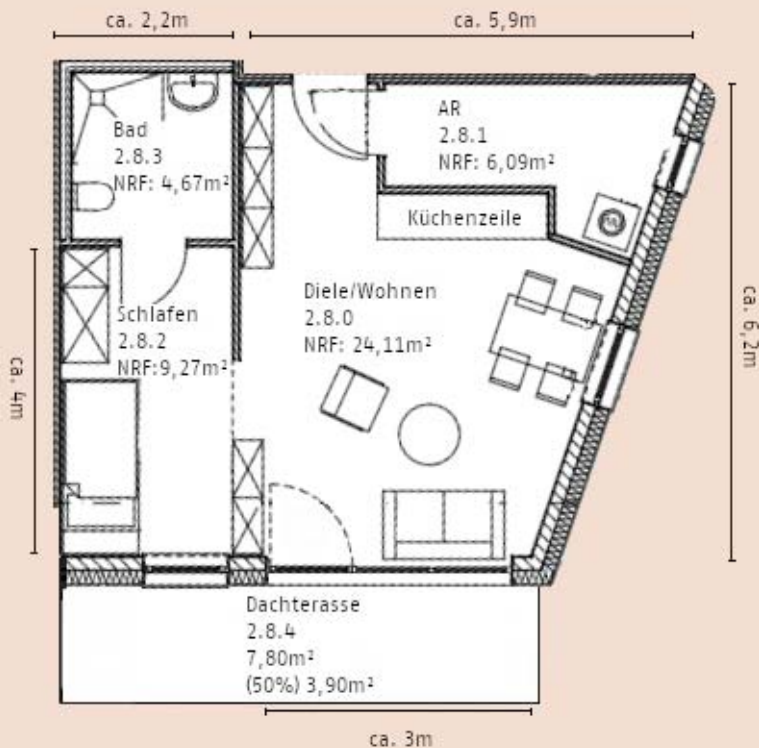


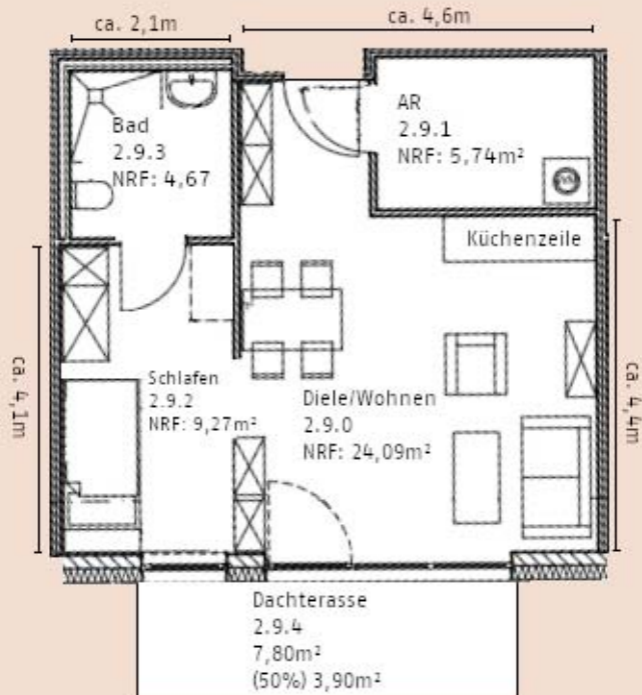




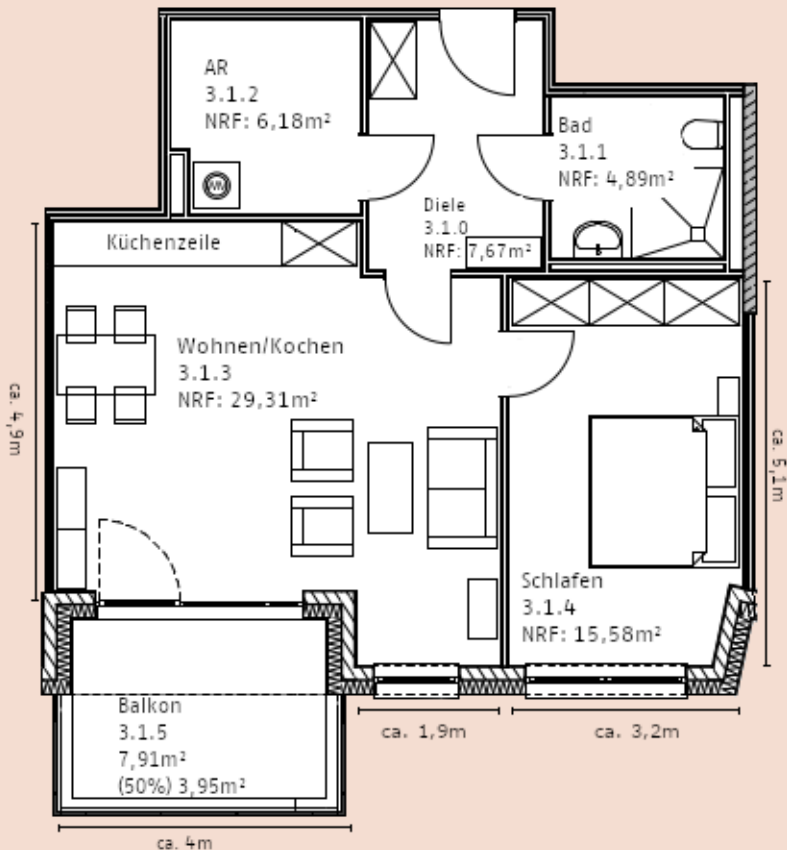


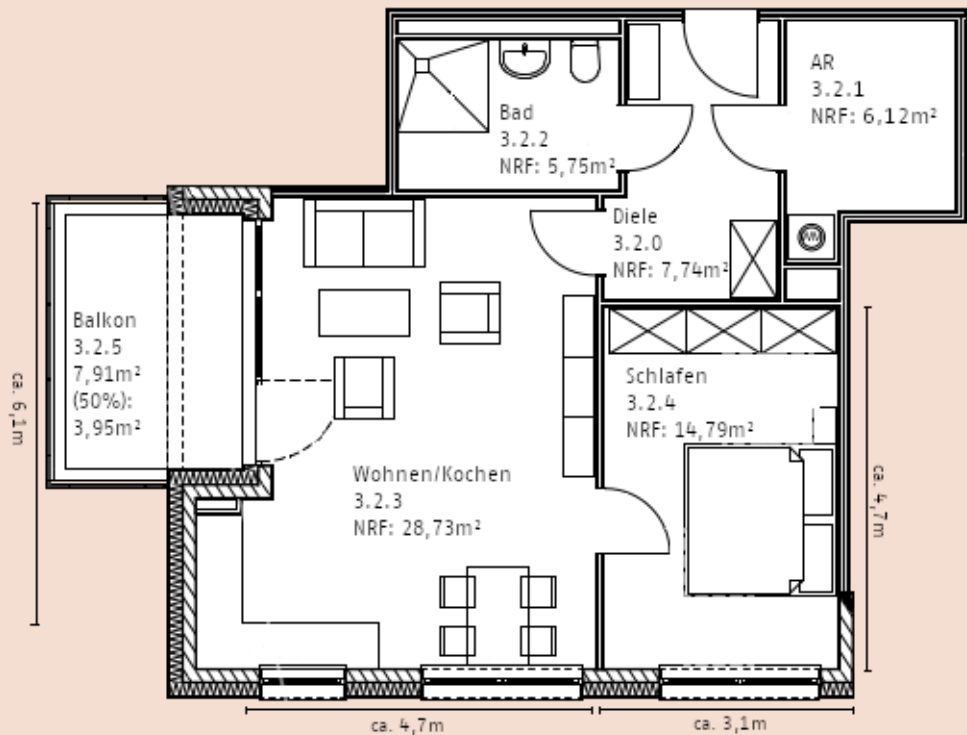


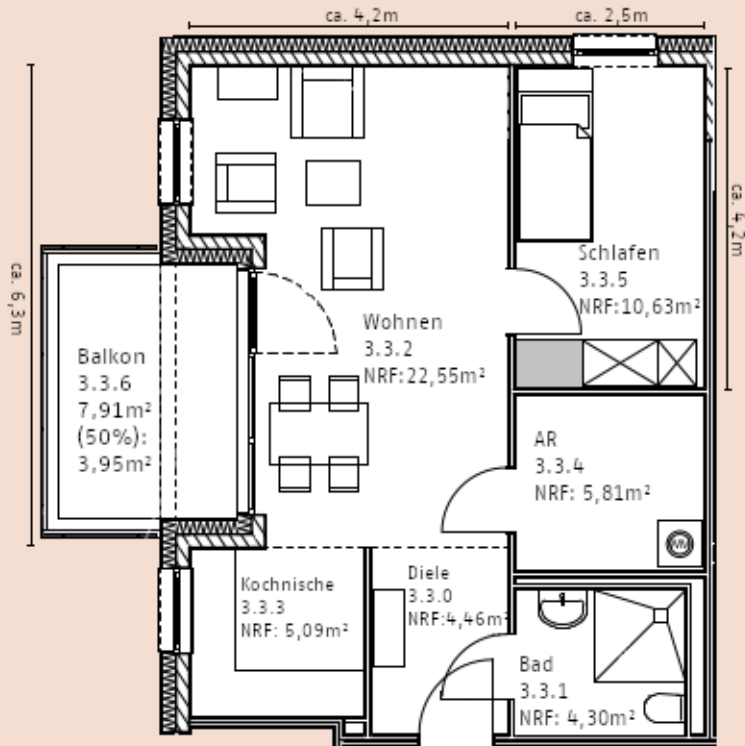


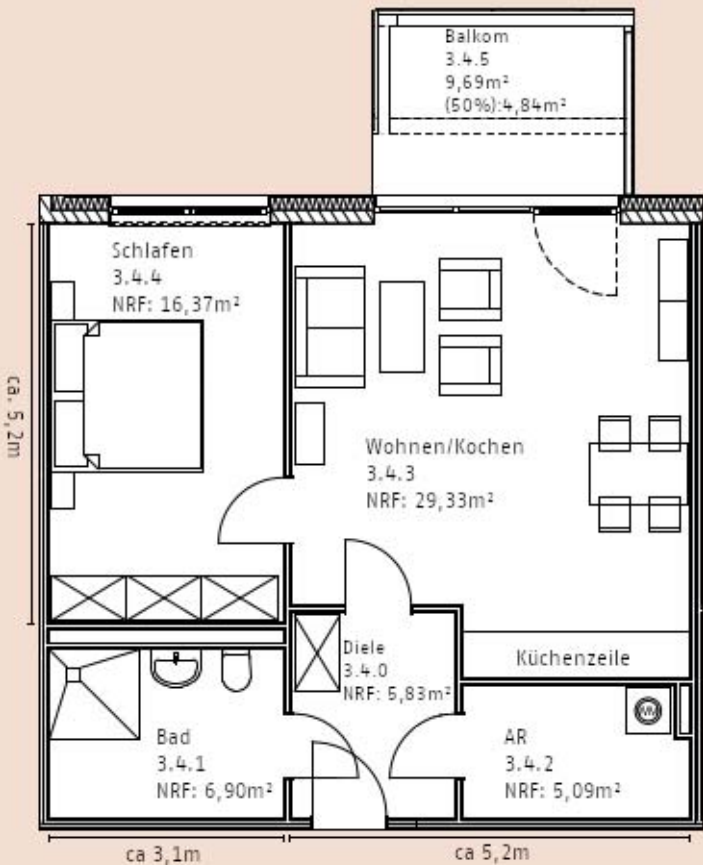


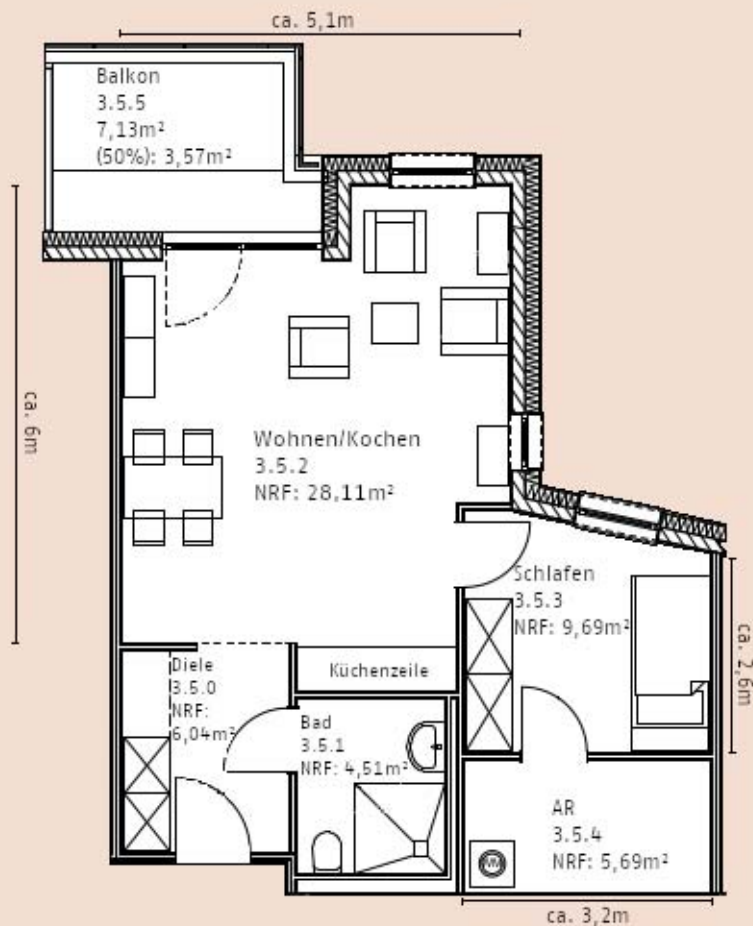


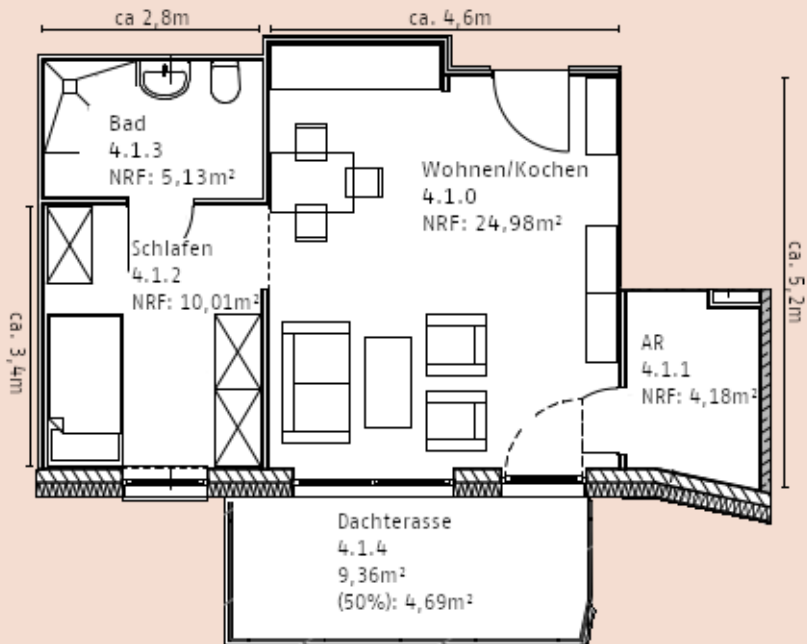


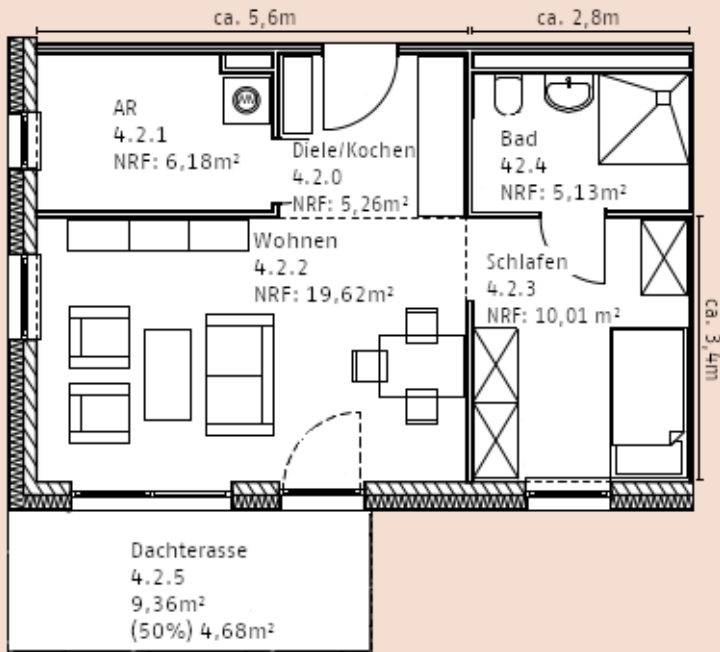


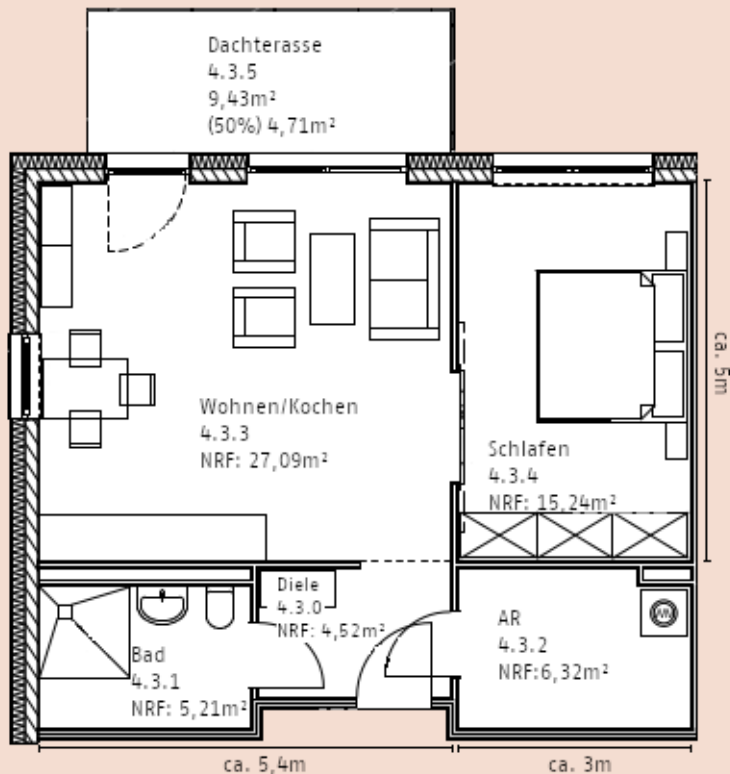


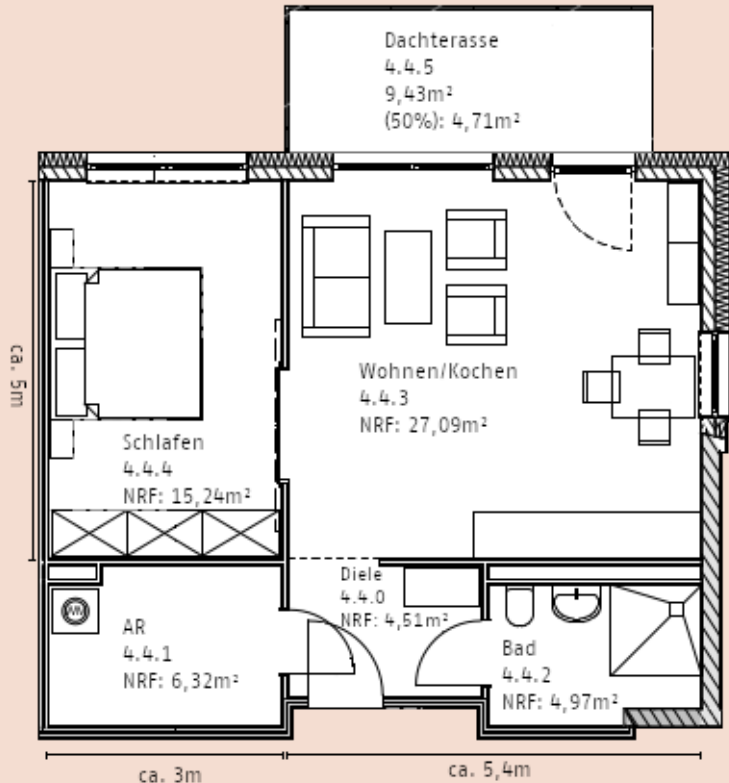












Dachterasse

4.4.5

9,43m²

(50%): 4,71m²

Wohnen/Kochen

4.4.3

NRF: 27,09m²

Schlafen

4.4.4

NRF: 15,24m²

AR

4.4.1

NRF: 6,32m²

Diele

4.4.0

NRF: 4,51m²

Bad

4.4.2

NRF: 4,97m²

ca. 5m

ca. 3m

ca. 5,4m